



Snow Defender™ 4500



Also available unpainted in Galvalume and Mill Finish

- Designed for exposed fastener panels like the ABM Panel
- Must be screwed into 2x4 purlins in the flat position
- Made with 16 Gauge type 304 stainless steel that will never rust
- EPDM rubber sealer saves time because no caulk is needed
- Powder coated for a long-lasting colored finish
- Online calculator at www.snowdefendercalculator.com



Bright White (WH)



Light Stone (LS)



Beige (BG)



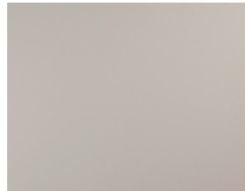
Clay (CL)



Tan (TN)



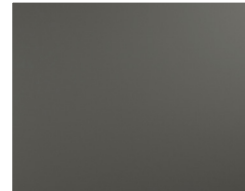
Bone White (BW)



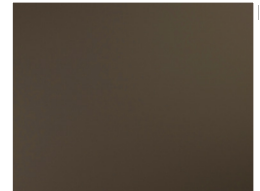
Ash Gray (AG)



Pewter Gray (PG)



Charcoal (CH)



Bronze (BZ)



Scarlet Red (SR)



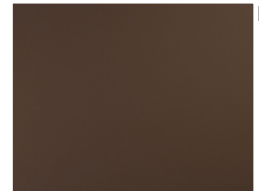
Barn Red (RD)



Colonial Red (CR)



Burgundy (BU)



Brown (BN)



Copper Penny (CP)



Patina Green (PA)



Avocado Green (AV)



Forest Green (FG)



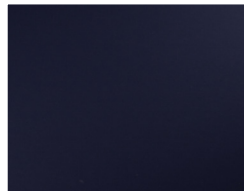
Evergreen (EG)



Slate Blue (SB)



Gallery Blue (GB)

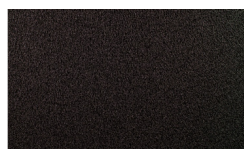


Dark Blue (DB)

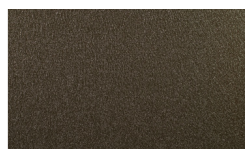


Black (BL)

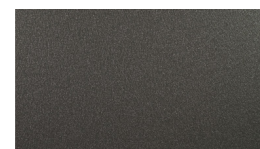
Textured Colors



Black (TBL)



Bronze (TBZ)



Shadow Gray (TSG)

82 Garden Spot Road
Ephrata, PA 17522
717-445-6885
Toll Free: 800-373-3703
Fax: 717-977-5175

HOURS:
M-F: 6:30 am - 5:30 pm
Sat: 7:00 am - 11:30 am
Closed Thanksgiving and Sundays
www.abmartin.net

