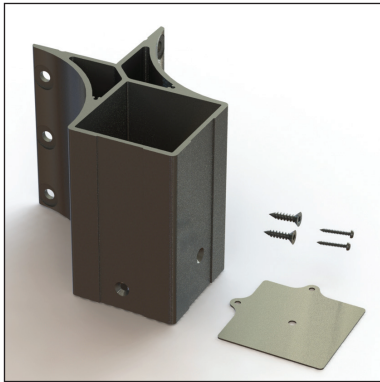
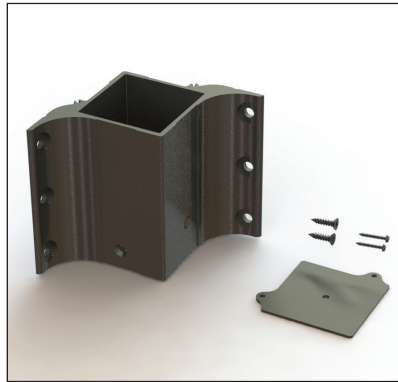




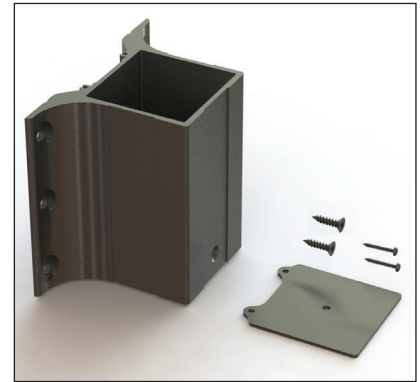
FASCIA MOUNT INSTALLATION GUIDE



Outside Corner
Post Mount Bracket



Inside Corner
Post Mount Bracket



Line Post Mount

RECOMMENDED TOOLS

- Safety Glasses
- Level
- Tape Measure & Pencil
- Power Drill

SOLD SEPARATELY

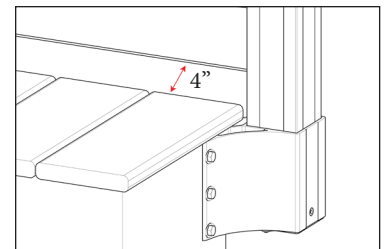
- Fascia Mount Section Support Bracket Kit (needed for all railing sections over 6')
- Under Deck Bracket Only (for use in line bracket scenario)

WHAT'S INCLUDED

- (1) Mounting Bracket (Corner, Line, Inside Corner)
- (1) Cap Plate
- (2) #10 x 1" Flat Head Screw
- (2) #8 x 1" Pan Head Screws

NOTE:

Maximum straight line distance from top deck surface edge to the bottom of rail or cable should never exceed 4 inches



1. These directions are only a guide and may not address every situation.
2. Always wear proper safety equipment while assembling and installing.
3. The installer should obtain all required building permits and follow all installation procedures in accordance with applicable building code requirements.
4. Keylink Fencing and Railing Inc. shall not be held liable for improper or unsafe installations.
5. Applying paint, other than Keylink's touch up paint, will void your warranty.
6. To ensure proper coverage by our warranty please visit our website and complete the warranty form and mail to: Keylink, 110 Peters Road, New Holland, PA 17557



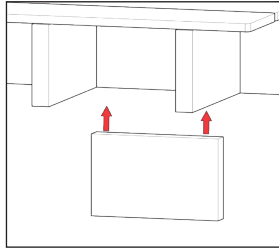
WARNING: This product can expose you to chemicals including Quartz (crystalline silica), which is known to the State of California to cause cancer, and Hexavalent Chromium, which is known to the State of California to cause birth defects or other reproductive harm. For more information go to www.P65Warnings.ca.gov.

Code Approved Fastening Method For Wood

Step 1:

(For line and inside corner only. Outside corner bracket installed without additional cutting).

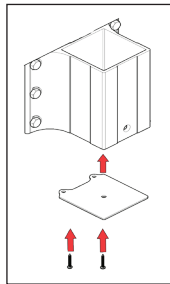
Using #9 x 3" wood screws, secure an additional wood board, behind outer joist where bracket will be mounted, to the inside joists



Step 2:

Fasten the bottom cap plate to bottom of Keylink Fascia Mount bracket with provided #8 x 1" pan head screws

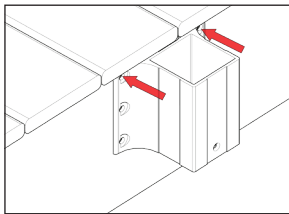
Do Not use impact or hammer drill to tighten



Step 3:

1" below deck's surface, mark and drill 3/8" holes for each bolt location on mounting surface

Note: bracket is designed for 3/4" deck overhang

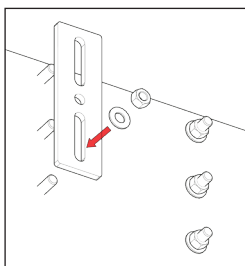


Step 4:

Insert 3/8" bolts with SAE flat washers & hex nut

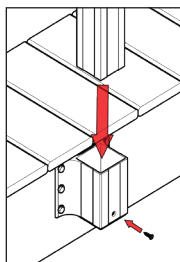
Line Mount requires 1 under deck bracket. Outside and Inside Corner Mount do not require under deck bracket

Do Not tighten fully until post is inserted



Step 5:

Insert post into Keylink Fascia Mount Bracket and using provided #10 x 1" flat head self drilling screws, secure post to bracket



Step 6:

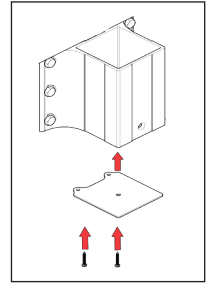
Fully tighten 3/8" bolts to mounting surface

Code Approved Fastening Method For Concrete

Step 1:

Fasten the bottom cap plate to bottom of Keylink Fascia Mount bracket with provided #8 x 1" pan head screws

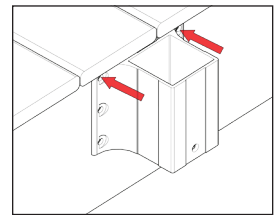
Do Not use impact or hammer drill to tighten



Step 2:

1" below deck's surface, mark and drill 15/64" holes for each bolt location on mounting surface

Note: bracket is designed for 3/4" deck overhang

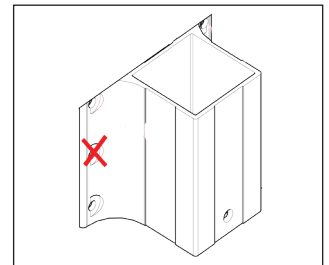


Step 3:

Fasten bracket to mounting surface with 3/8" x 2" lag bolt

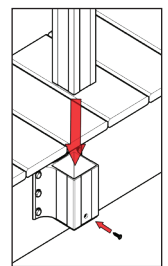
Do Not tighten fully until post is inserted

Do Not secure bracket using center mounting hole for line bracket and inside corner bracket



Step 4:

Insert post into Keylink Fascia Mount Bracket and using provided #10 x 1" flat head self drilling screws, secure post to bracket



Step 5:

fully tighten 3/8" lags to mounting surface