

# EQUINE

## BUILDINGS

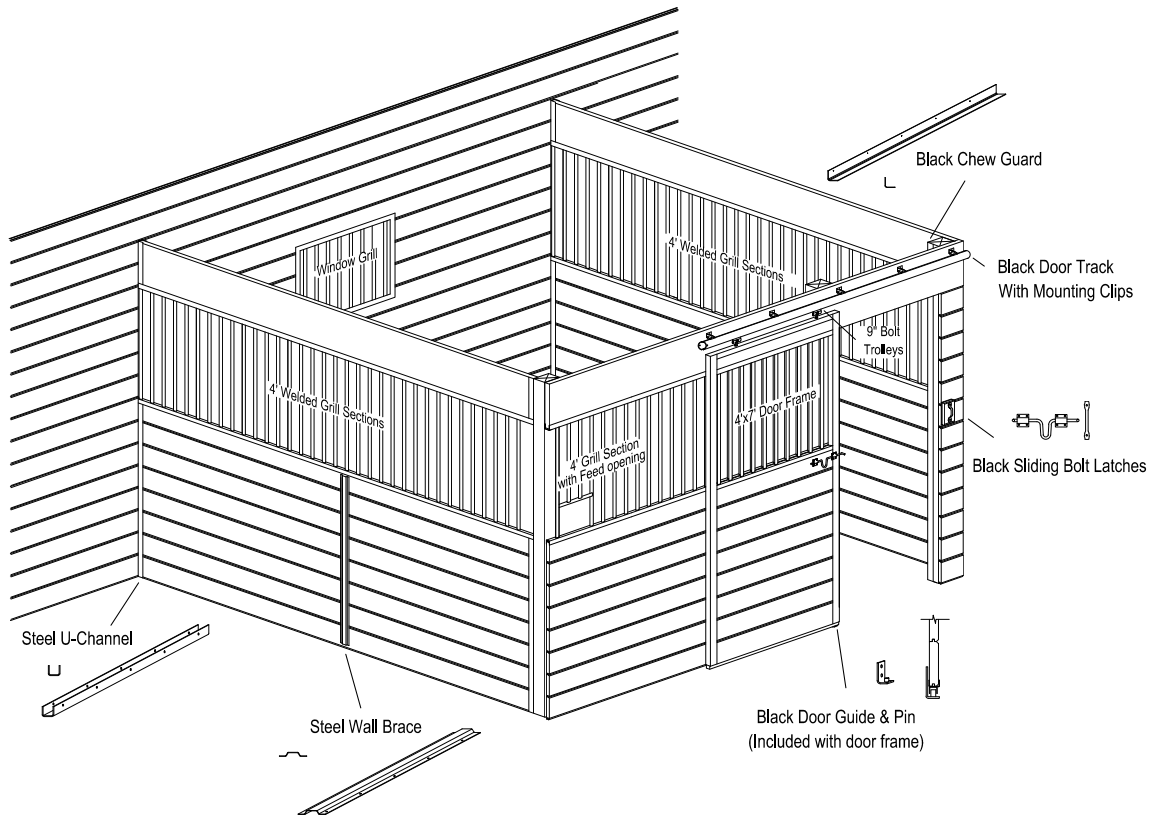






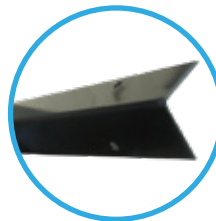


# POWDER-COATED HORSE STALL COMPONENTS

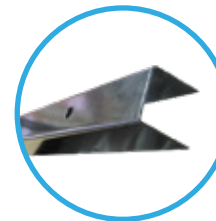


## STALL WALL RAILS, WALL CAPS, AND CORNER ANGLES

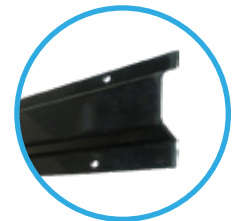
Our full line of powder-coated black steel rails, caps, and angles lets you complete your stall system to suit your needs. Our heavy-duty stall wall rails attach easily to any post for receiving the ends of the stall wall planks. Wall caps prevent cribbing on any exposed plank edges. Corner angles make the ideal cribbing guard for wooden posts.



Chew Guard



U-Channel



Wall Brace

PART #	DESCRIPTION	SIZE	LENGTH
HSUC4	Black U Channel - 14 Ga.		4'
HSUC8	Black U Channel - 14 Ga.		8'
HSCG4	Black Chew Guard - 20 Ga.	1 1/2" x 1 1/2" Angle	4'
HSCG	Black Chew Guard - 20 Ga.	1 1/2" x 1 1/2" Angle	8'
HSWB4	Black Wall Brace		4'
HSWB	Black Wall Brace		8'



# GRILLS & WINDOW GRILLS

## WINDOW GRILLES

Our window grilles feature fully welded construction with 14 ga. powder-coated black galvanized steel. Window grilles, which are available in a size to fit most common window openings, allow you to safely include windows in your barn and stall designs. The pole spacing of the grilles prevents the horse from getting at the glass while still allowing the benefits of a window for fresh air and natural lighting.



PART #	DESCRIPTION	SIZE (W H)
HSWG32	3' x 2' Black Window Guard Grill	35.5" x 23.5"
HSWG33	3' x 3' Black Window Guard Grill	35.5" x 35.5"
HSWG3644	36" x 44" Black Window Guard Grill	35.5" x 43.5"
HSWG3648	3' x 4' Black Window Guard Grill	35.5" x 47.5"
HSWG43	4' x 3' Black Window Guard Grill	47.5" x 35.5"

## SOLID GRILL



PART #	DESCRIPTION	SIZE (W H)
HSGS2	2' Black Welded Grill Section	24" x 34"
HSGS4	4' Black Welded Grill Section - 14 ga	48" x 34"

## GRILLE WITH FEEDER OPENING



PART #	DESCRIPTION	FEEDER OPENING	SIZE (W H)
HSG4FO	4' Grill with Feeder Opening	10" x 11"	48" x 34"

## SWING-OUT FEEDER DOOR



PART #	DESCRIPTION	SIZE (W H)
HSG2FD	2' Grill With Feeder Door	24" x 34"

# STALL DOORS, DOOR TRACK, & TROLLEYS

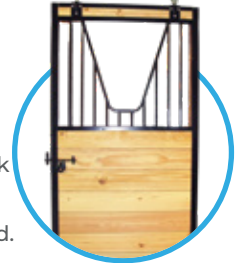
## DOOR FRAME WITH GRILL

Includes hyphenate powder-coated black Top Cap, Guide Channel, and Guide Pin. Tongue and Groove Lumber Not Included.



## DOOR FRAME WITH YOKE GRILL

Includes hyphenate powder-coated black Top Cap, Guide Channel, and Guide Pin. Tongue and Groove Lumber Not Included.

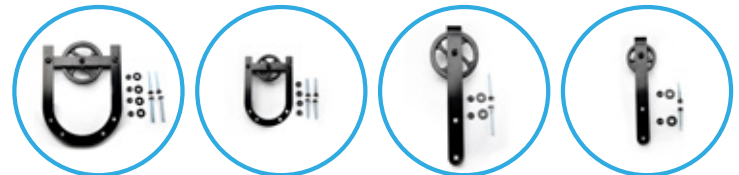
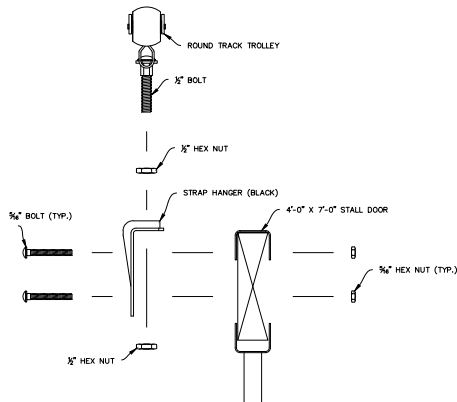


PART #	DESCRIPTION	SIZE
HSD4G	4' Black Door Frame	4' x 7'

PART #	DESCRIPTION	SIZE
HSYD	4' Black Yoke Door Frame	4' x 7'

## FLAT TRACK & TROLLEY SYSTEMS

Perfect for that historical barn door look, with the option of the horseshoe or strap systems which include all the hardware needed. (6', 8', & 10' track available.)



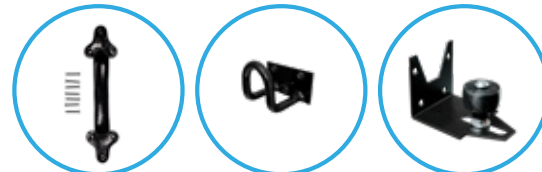
TFTH

TFTHM

TFTSL

TFTSM

PART #	DESCRIPTION	SIZE
TFTH	Black Flat Track U-Trolley	11.5" L x 9" W x 2.75" D
TFTHM	Mini Black Flat Track U-Trolley	7.5" L x 5.25" W x 2.75" D
TFTSL	Black Flat Track Strap Trolley	14" L x 1.5" W x 3.5" D
TFTSM	Mini Black Flat Track Strap Trolley	11" L x 1.25" W x 2.75" D



TFDH

TCFTU

HSSRB

## TRACK & TROLLEY SYSTEMS

Your stall system will come with our easy-to-install weatherstrip track, powder-coated black to match the finish of your stalls. Your stall door will be carried by a pair of Delrin strap trolleys with the straps also coated to match the stalls. This self-cleaning and self-lubricating system is backed by a lifetime warranty on the track and trolleys.

PART #	DESCRIPTION	LENGTH
HSBWDT	Pair Black Strap Trolley (Without Endcaps)	
HSBT8	Black Side Mount Track W/Hangers	8'
HSBTEC	Black Track End Cap	

PART #	DESCRIPTION	SIZE
TFDH	Black Flat Track Door Handle with Six 1-1/4" Screws	11" x 2"
TCFTU	Black Flat Track Bottom Guide U Keeper	2-3/4"
TCFDG	Black Flat Track Bottom Door Guide Stay Roller	
HSSRB	Black Adjustable Small Stay Roller	



# DOOR KEEPS & FEED ACCESSORIES

Our welded steel keepers serve as the guides and stops for the stall door. The fully hidden design eliminates any exposed points that could injure your horses or yourself. They are easy to install. Simply position the keepers where desired and attach with the provided fasteners. There are no moving parts to wear out or break, and, like everything else, they are powder-coated black.

## GUIDE PIN



PART #	DESCRIPTION
HSGPO	Guide Pin For Horse Stall Door

## BLACK NON-ADJUSTABLE DOOR STOP



PART #	DESCRIPTION
HSBDS	Black Non-Adjustable Door Stop

## SLIDING BOLT LATCH



PART #	DESCRIPTION	SIZE (W H)
HSBSBL	Black Sliding Bolt Latch	10" x 5"
HSSBLH	Black Horseshoe Sliding Bolt Latch	10" x 6"

## PORTABLE WALL MOUNT PAIL HOLDER



PART #	DESCRIPTION	O. DIAMETER	HEIGHT
HSPFMPH	Portable Wall Mount Pail Holder	14 3/4"	9 5/8"

## BLACK PHILIP PAN HEAD SCREW



PART #	DESCRIPTION	SIZE (W H)
HSS1BL	#12 Horse Stall Pan Head #3 Philip Screw Black - 100/bag	#12 x 1-1/4"

## WALL HAY RACK



PART #	DESCRIPTION	WIDTH	HEIGHT	DEPTH
HSWHR	Wall Hay Rack	25"	26"	12"

## CORNER HAY RACK



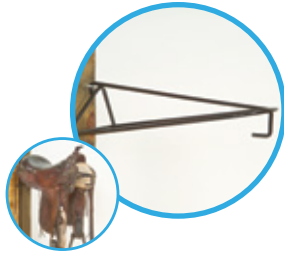
PART #	DESCRIPTION	WIDTH	HEIGHT	DEPTH
HSCHR	Corner Hay Rack	28 1/2"	26"	18 1/4"

## BLANKET BAR



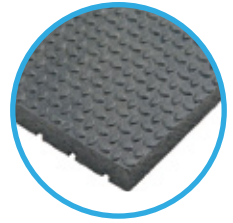
PART #	DESCRIPTION	WIDTH
HSBB	Black Blanket Bar W/ Bridle Hook	36"

## PORTABLE SADDLE RACK



PART #	DESCRIPTION	WIDTH	HEIGHT	DEPTH
HSPSR	Portable Saddle Rack	12 ¼"	14 ⅝"	31 ⅜"

## RUBBER HORSE STALL MAT

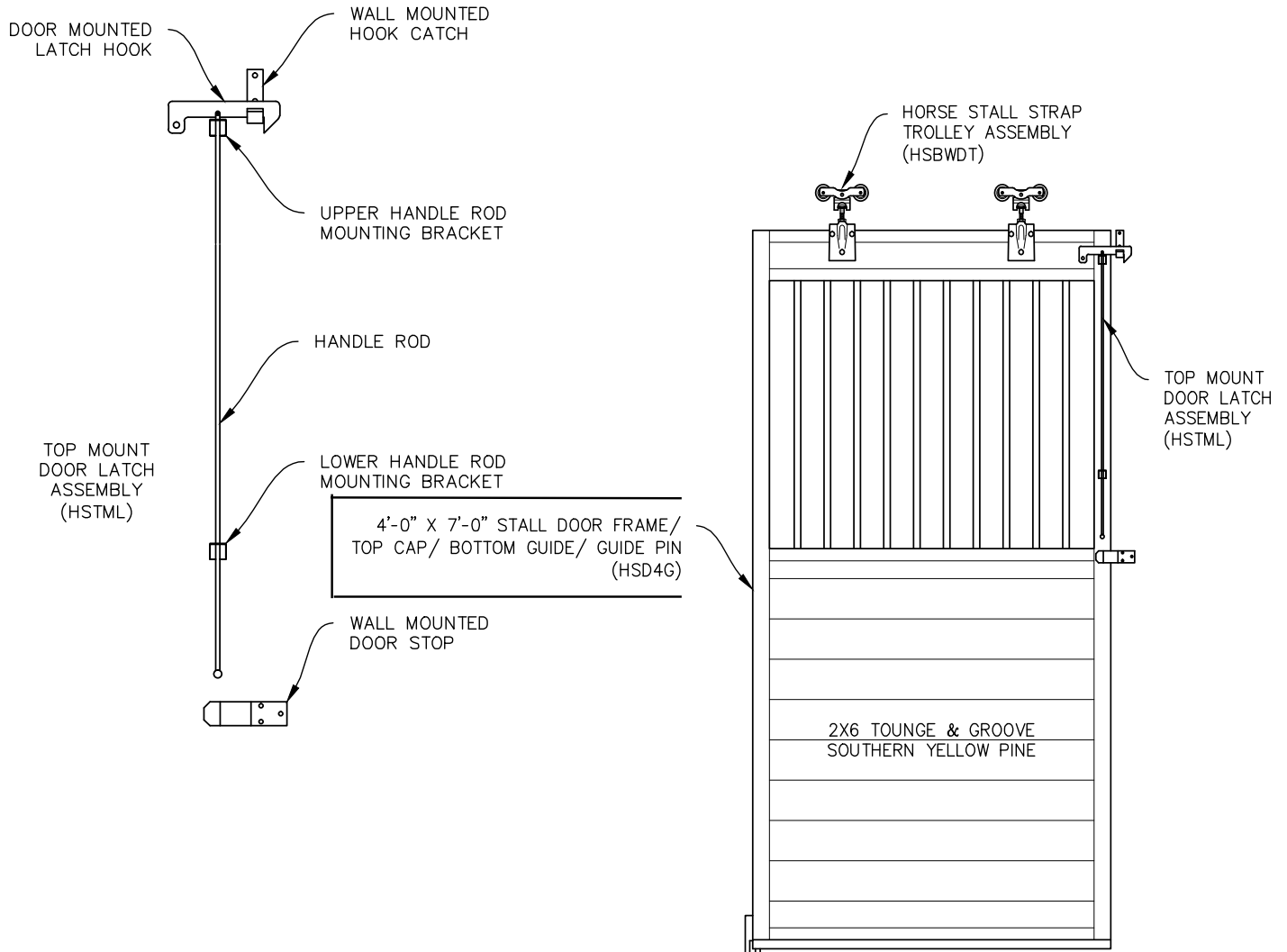


PART #	DESCRIPTION	SIZE
HSMAT	Rubber Horse Stall Mat	72" x 48" x 3/4"

## TOP MOUNT DOOR LATCH

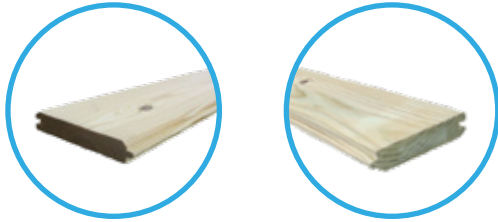


PART #	DESCRIPTION	SIZE (W H)
HSTML	Top Mount Door Latch for Sliding Horse Stall Door	38.5" x 15"



# LUMBER

Beautiful & durable horse stalls constructed with tongue & groove southern yellow pine 2x6 or 2x8 lumber fronts and partitions. All wood is surfaced on 4 sides for a smooth finish. Use treated lumber for the bottom two rows to resist rot and decay from contact with ground and manure. Yellow Pine is a beautiful wood that provides unequalled strength and accepts finishes well. The tongue and groove design provides a unified construction for strength and durability. Combine this with our powder-coated grilles and accessories for a truly finished appearance.



## TONGUE & GROOVE YELLOW PINE

Available in 2' increments

PART #	DESCRIPTION	SIZE	LENGTHS
LYP26**TG	#2 T&G Yellow Pine	2 x 6	10' - 16'
LYP28**ITG	#1 T&G Yellow Pine	2 x 8	10' - 16'
LYP28**TG	#2 T&G Yellow Pine	2 x 8	10' - 16'
LYP2816TGNOV	#2 T&G Yellow Pine (No V Groove)	2 x 8	16'

## TREATED TONGUE & GROOVE YELLOW PINE

Available in 2' increments

PART #	DESCRIPTION	SIZE	LENGTHS
LT26**TG	Treated T&G Yellow Pine	2 x 6	10' - 16'
LT28**TG	Treated T&G Yellow Pine	2 x 8	12' & 16'



# DUTCH DOORS

## WOODEN, STEEL, AND ALUMINUM HINGED DOORS

The 4' x 7' split hinge door allows you to open both panels allowing horses to pass through, or just open top panel to allow fresh air and sunlight through and permit the horse to look out. All doors come fully pre-hung for easy installation.

### WOOD DUTCH DOOR

- Comes with black chew guard.
- Hinges on Left or Right when standing on the outside, facing the door.
- This Tongue & Groove door can be painted or stained to match your building colors.
- Easy to install and easy to use.

PART #	DESCRIPTION	ROUGH OPENING	SIZE
DDWL	Wood Dutch Door W/Cross Buck	52" x 86.5"	4' x 7'
DDWR	Wood Dutch Door W/Cross Buck	52" x 86.5"	4' x 7'
DDW44	Wood Dutch Door W/Cross Buck		4' x 4'



### STEEL DUTCH DOOR

- Powder-coated to the color combination of your choice.
- Will not rot.
- Heavy-duty.

PART #	DESCRIPTION	ROUGH OPENING*	SIZE
DDS44	Classic Steel Dutch Door - Half	48.25" x 42.75"	4' x 42"
DDS	Classic Steel Dutch Door	48.75" x 84.75"	4' x 7'

\*Rough Opening size is 1/2" larger than actual size.



### ALUMINUM DUTCH DOOR

- Lightweight but equal in strength to steel
- Rust and rot proof
- Window options available
- Made to the color combination of your choice

PART #	DESCRIPTION	ROUGH OPENING*	SIZE
DDA	Economy Aluminum Dutch Door	48.75" x 84.75"	4' x 7'

\*Rough Opening size is 1/2" larger than actual size.

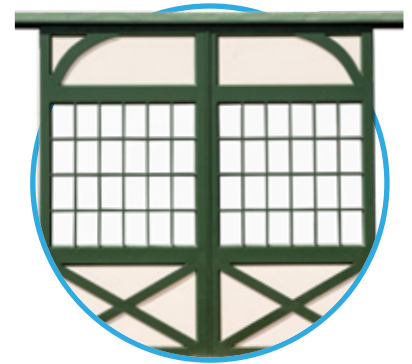


# ALUMINUM SLIDING DUTCH DOORS

## ALUMINUM SPLIT SLIDER DUTCH DOOR - SPECIAL ORDER

- Economy or Elite Grade.
- Lightweight but equal in strength to steel.
- Rust and rot proof.
- Tempered glass window options available including arch tops.
- Many Size and color combinations available.

PART #	DESCRIPTION
DDSS	Aluminum Split Slider Dutch Door W/Window



# METAL PANELS

## ABSEAM

Our durable 24 ga. ABSeam Panel is the ultimate choice for a beautiful, long-lasting standing-seam metal roof.

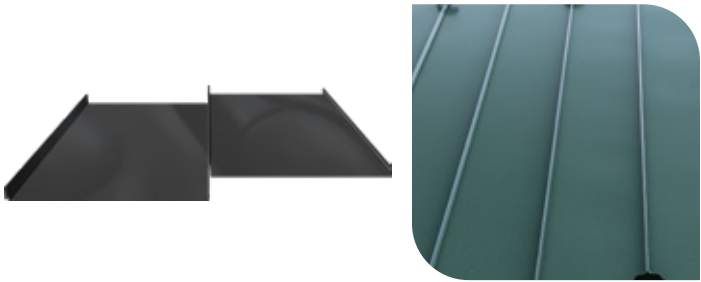
**Height:** 1.5" ribs.

**Width:** Standard width is 19.5", but can be made narrower for smaller applications.

**Gauge:** 24 gauge steel.

**Weight:** Approx. 1lb per square foot.

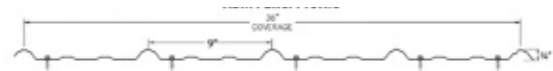
**Finish:** Sherwin-Williams' Fluropon® PVDF system is backed with a 40-year limited paint warranty.



## ABM PANEL

Heavy-duty steel - in over 30 energy-efficient colors with 40-year paint warranties - heat-formed and rolled to custom lengths in hours... not days.

The ABM Panel provides 36" wide coverage, and it is rolled to custom lengths from 1' to 48' in ¼" increments. This means you're not paying for that extra 2' or ½" that you don't need. Plus, think of all the time you are saving by not having to make extra cuts.



Approximately 3/4" high major ribs on 9" centers with two 1" wide minor between each major rib for extra strength. The overlap has an antisiphon break for leak-free application with 3:12 slope and greater.





# METAL PANELS

## HERITAGE PANEL

Get a classic standing seam look with this exposed-fastener panel. Less expensive and easier to install than traditional standing seam panels, this panel offers a similar look while saving time and money.

**Coverage:** 35.5"

**Rib Height:** 3/4"

**Steel Thickness:** 26 Gauge

**Substrate:** AZ50 Galvalume or G100 Galvanized

**Paint Warranty:** 40 Years



## METAL BOARD & BATTEN

AB Martin manufactures metal panels in the classic board & batten style. Historically, board & batten siding was made by placing narrow wooden strips ("battens") over a seam between wide boards.

While the traditional material was wood, board & batten today can be made of various materials including metal. Enjoy the traditional board & batten style combined with the longevity of metal!

**Coverage:** 10"

**Minimum Length:** 3'

**Rib Height:** 5/8"

**Gauge:** 26

**Substrate:** AZ50 Galvalume

**Paint Warranty:** 40 Years









# CUPOLAS & WEATHERVANES

## THE CHERRY ON TOP OF YOUR MASTERPIECE

- Custom designed to match your building colors.
- Four standard sizes: 16", 24", 36", & 48" square.
- Louvered sides are standard.
- Pre-assembled for quick installation.
- Windows are optional on 36" and 48" cupolas.
- Any base, wall, trim, and roof color combinations.
- Vented or solid weathervane base.
- Pre-installed heavy gauge base designed to support the cupola without additional framing or flashing, custom made to match to roof pitch.



16" Cupola



24" Cupola



36" Cupola



48" Cupola

PART #	DESCRIPTION	SIZE	HEIGHT
CUP16	16" Standard Cupola	16" x 16"	25"
CUP24	24" Cupola	24" x 24"	36"
CUP36	36" Cupola	36" x 36"	48"
CUP48	48" Cupola	48" x 48"	61"

## WEATHERVANES



24" Country Doctor



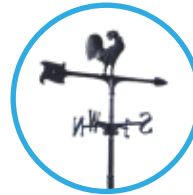
24" Eagle



24" Rooster



24" Horse



30" Rooster



30" Spear



30" Sailboat



30" Antique Auto



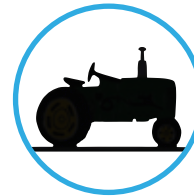
30" Country Doctor



30" Horse



30" Pheasant



30" Tractor



30" Buck



30" Cow



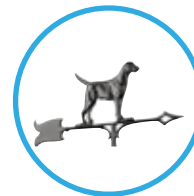
30" Duck



30" Eagle



30" Pig



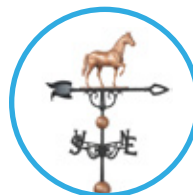
30" Black Lab



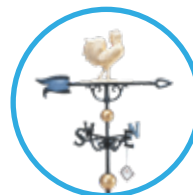
30" Golden Retriever



46" Yacht



46" Horse



46" Rooster



46" Eagle









**EPHRATA**  
82 GARDEN SPOT ROAD  
EPHRATA, PA 17522

**717.445.6885**  
TOLL FREE: 800.373.3703  
FAX: 717.977.5175

Distributed by

